

Pre-Opening Condition 5.h – REMS Plan in alignment with CCSD

HHA Safety Efforts will be in alignment with CCSD District Safety Efforts

* This material was excerpted from the CCSD Emergency Response and Safety Efforts Plans.

HHA within the Cherry Creek School District is committed to creating safe, secure, and caring learning environments. This emphasis has resulted in a Comprehensive Safe Schools Plan that includes a purposeful connection between physical safety/security and the psychological safety of students.

Physical safety includes measures such as visitor check-in and identification badges worn throughout school, video surveillance, preparedness planning, and practice drills to prepare for a variety of potential incidents. HHA school crisis plans are aligned with the recommendations of state Homeland Security, local emergency responders, and public safety officials and use the general response practices outlined in the National Incident Management System (NIMS).

Psychological safety provides for the social-emotional well being of students and works to create positive school climates through measures such as asset development, bullying prevention, Positive Behavior Supports, and early identification and intervention for at-risk students.

HHA's Safety team is composed of staff and support systems that participate in planning and resources to reflect current needs and world events. HHA will hold training and practice drills for staff and students that will contribute to preparedness for potential crisis events.

HHA will have a functioning school safety team that monitors the building plans for both psychological and physical safety, and a crisis response & recovery staff team that oversees and implements the school's crisis response plan when needed. Major components of the HHA school safety plans are as recommended by the US Department of Education.

MITIGATION/PREVENTION

Prevention steps are taken to ensure that:

HHA Families are connected by parent volunteers. Volunteers will work side by side with children and staff to prevent bullying. Responsive decision-making is based on information gathering. Expectations are clearly communicated to students, staff and parents. Socio-emotional behavior skills are taught throughout the school day.

PREPAREDNESS/PLANNING

Preparedness includes plans that schools develop to facilitate an effective response when a crisis situation occurs. This also includes planning for effective interventions with youth who demonstrate behavioral difficulties, including training of all staff, students and parents in early warning signs.

INTERVENTION/RESPONSE

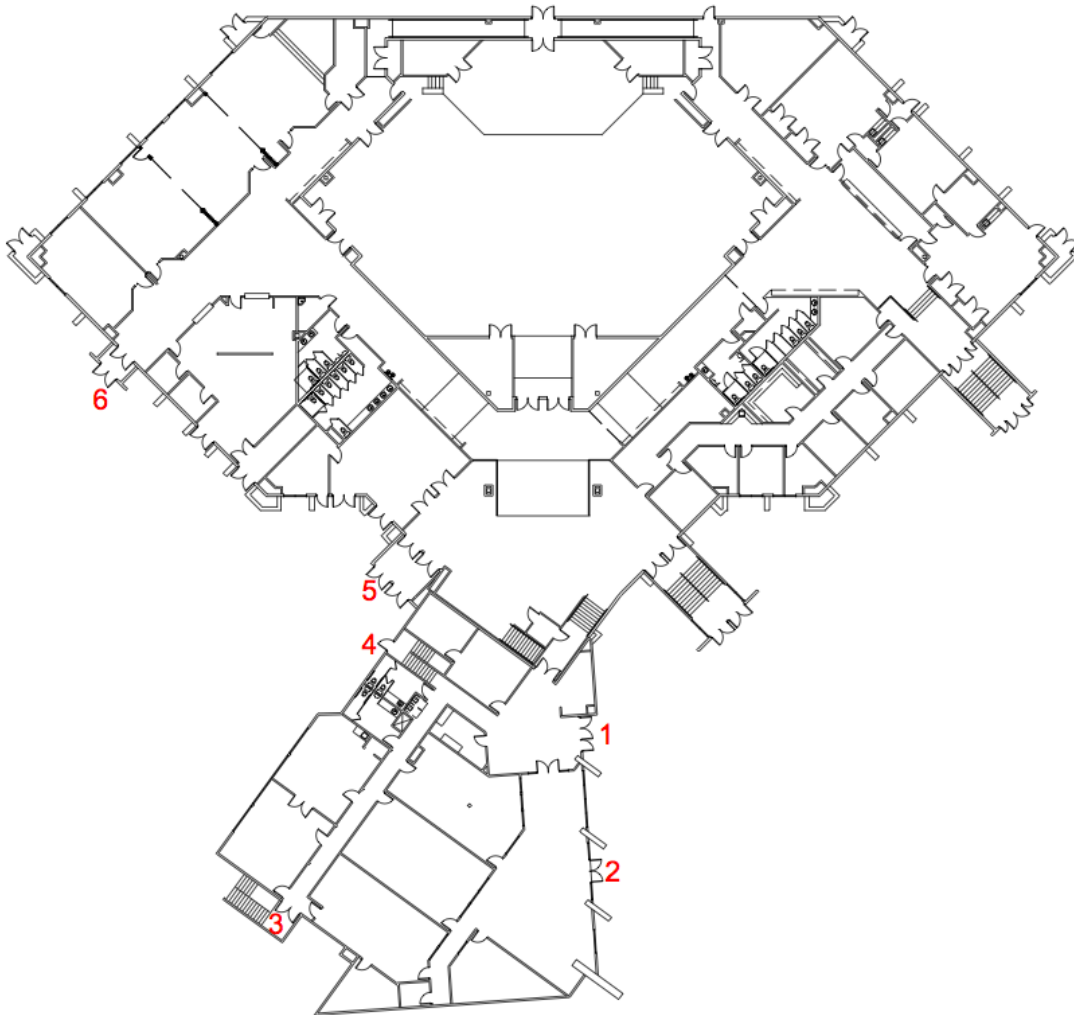
HHA will have response protocols for situations and/or students who are at-risk, in crisis or potentially dangerous. The Principal will assess students and implement interventions that are designed for students who do not respond to prevention efforts. This also includes implementing a threat assessment process, and using the RTI/Problem Solving Process when needed.

CRISIS RESPONSE/RECOVERY

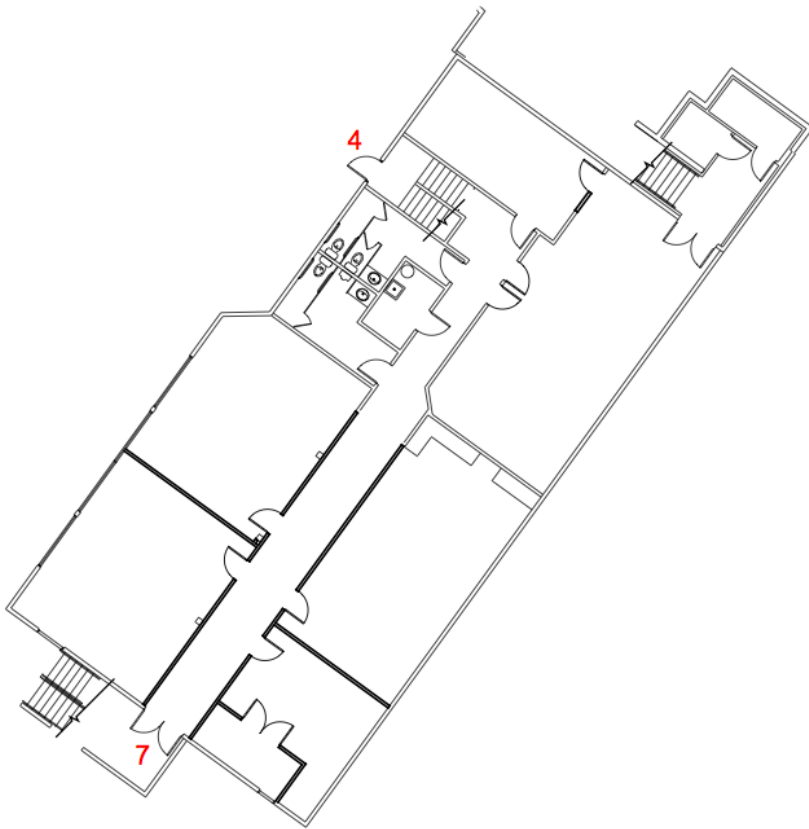
Recovery includes the steps the school community uses to respond appropriately during and after a crisis situation for the care and recovery of students and staff. The goal is to return HHA to a caring and supportive learning environment.

Exterior Door Numbering – Emergency Response Labeled Doors

**HERITAGE HEIGHTS ACADEMY
MAIN LEVEL SCHOOL EXTERIOR DOORS**



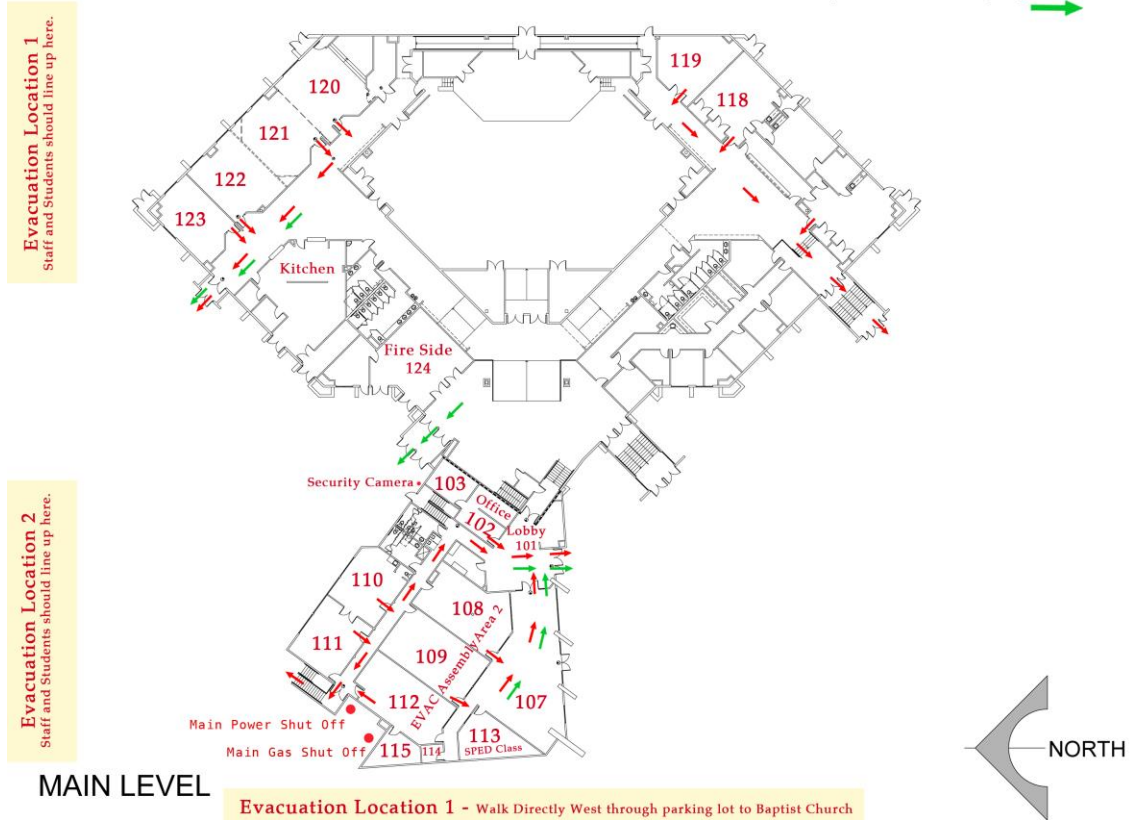
HERITAGE HEIGHTS ACADEMY BASEMENT SCHOOL EXTERIOR DOORS



Emergency Evacuation Plans –

Heritage Heights Academy (Edge Church)
19697 E. Smoky Hill Road
EVACUATION PLAN

Special Needs Emergency Exits 





HHA Tornado Shelter Area- Basement Level

